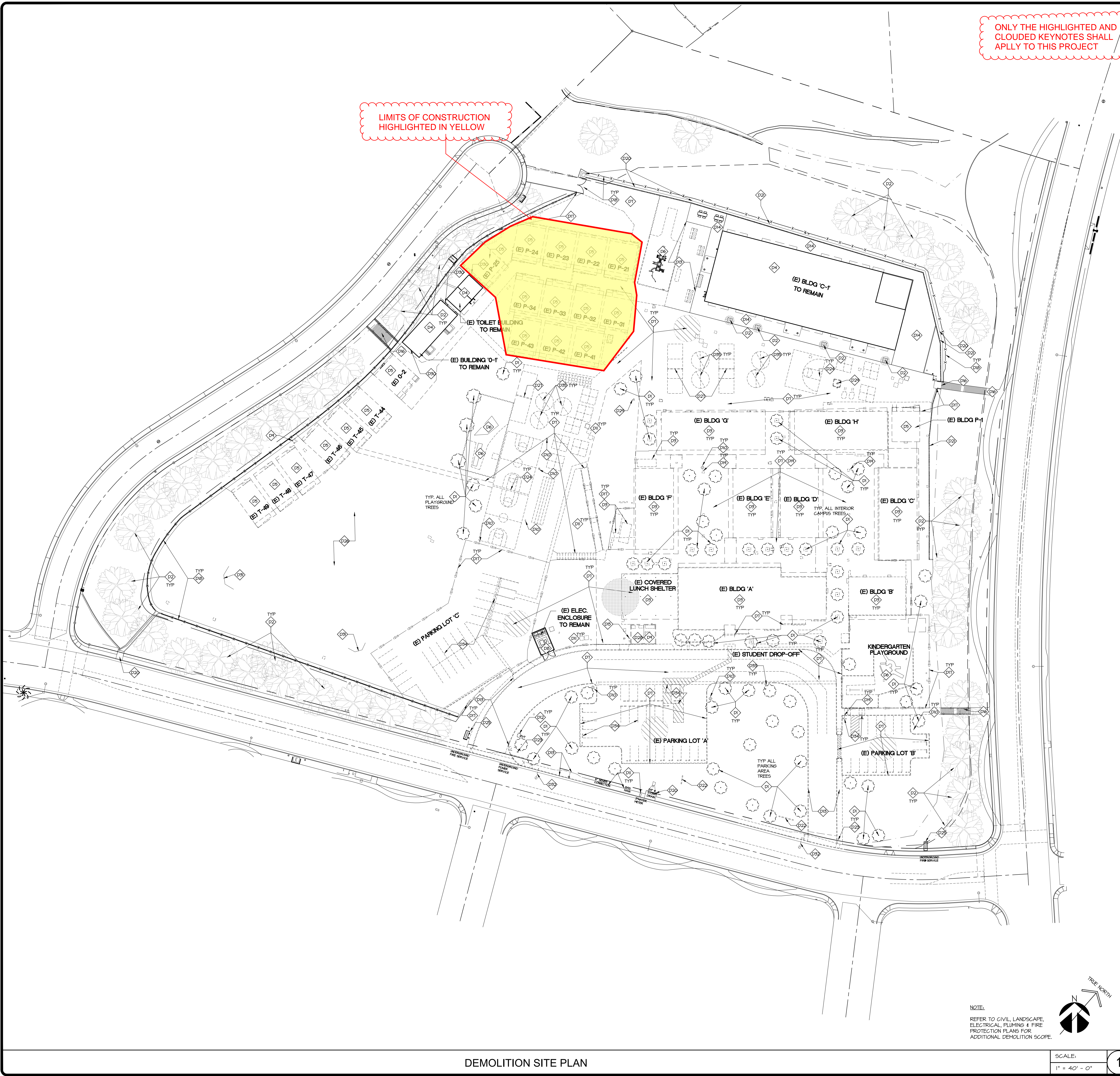


BY ZEMBA + PRIETO ARCHITECTS ALL COMMON LAW COPYRIGHT AND OTHER PROPERTY RIGHTS RESERVED. THIS DOCUMENT IS AN ORIGINAL AND UNPUBLISHED WORK PRODUCT OF ZEMBA + PRIETO ARCHITECTS. THIS WORK SHALL NOT BE DUPLICATED, COPIED, REPRODUCED, OR ASSIGNED TO ANY THIRD PARTY WITHOUT FIRST OBTAINING THE EXPRESS WRITTEN CONSENT OF ZEMBA + PRIETO ARCHITECTS. VISUAL CONTACT WITH THIS DOCUMENT SHALL CONSTITUTE EVIDENCE OF ACCEPTANCE OF THESE RESTRICTIONS. CONTRACTORS SHALL VERIFY AND BE RESPONSIBLE FOR ALL DIMENSIONS AND CONDITIONS ON THE JOB UPON DISCOVERY OF ANY VARIATION, DISCREPANCY, OR OMISSION. NOTIFY ZEMBA + PRIETO ARCHITECTS AND PRIOR TO PROCEEDING WITH RELATED WORK OBTAIN WRITTEN RESOLUTION FROM ZEMBA + PRIETO ARCHITECTS.



- ### SITE DEMOLITION KEYNOTES
- D1 REMOVE (E) CAMPUS TREES IN THEIR ENTIRETY INCLUDING ROOT SYSTEM.
  - D2 (E) PERIMETER TREES TO REMAIN. PROTECT.
  - D3 DEMOLISH AND REMOVE BUILDING / STRUCTURE IN ITS ENTIRETY. COORDINATE WITH DISTRICT CM FOR FINAL DESTINATION. REMOVE CONCRETE FOOTINGS & GAP UTILITIES.
  - D4 (E) BUILDING TO REMAIN. PROTECT ALL UTILITY LINES. RECONNECT UTILITIES WHERE REQUIRED FOR CONTINUED UNINTERRUPTED SERVICE. PROVIDE TEMP CHAIN LINK FENCING.
  - D5 **DEMOLISH AND REMOVE RELOCATABLE (PORTABLE) CLASSROOM BUILDING IN ITS ENTIRETY. GAP ALL UTILITIES.**
  - D6 DEMOLISH AND REMOVE (E) PLAYGROUND EQUIPMENT, CONCRETE FOOTINGS & RUBBER SURFACING.
  - D7 SANICUT/DEMOLISH AND REMOVE (E) CONCRETE PAVING / ASPHALT PAVING (CONC. STEPS, RAMPS, SIGNAGE & WHEEL STOPS IN ITS ENTIRETY. CONTRACTOR SHALL CONTACT 'DIG ALERT' TO ASCERTAIN UNDERGROUND UTILITIES AND PROTECT IN PLACE. ANY UTILITIES THAT INTERFERE WITH NEW PAVING SHALL BE RELOCATED / LOWERED/RAISED AS TO NOT INTERFERE WITH NEW WORK - TYP. THROUGHOUT ENTIRE PROJECT. REFER TO CONSULTANT'S DRAWINGS FOR ADDITIONAL INFORMATION. CONTRACTOR SHALL REMOVE AND PROPERLY DISPOSE OF ANY 'PETROMAT' IF FOUND UNDER ASPHALT DURING DEMOLITION.
  - D8 (E) ELECTRICAL EQUIPMENT/ CONCRETE PAD TO BE PROTECTED IN PLACE.
  - D9 (E) ELECTRICAL WIRING AND CONDUITS LEADING INTO BOX SHALL BE PROTECTED IN PLACE DURING ALL PHASES OF THE CONSTRUCTION. REFER TO ELECTRICAL DWG'S FOR ADDITIONAL INFORMATION. ADJUST TO GRADE AS REQUIRED FOR NEW PAVING.
  - D10 REMOVE ELECTRICAL EQUIPMENT, (E) ELECTRICAL WIRING AND CONDUITS LEADING INTO THE EQUIPMENT SHALL BE MODIFIED.
  - D11 REMOVE (E) SITE LIGHT POLE, (E) ELECTRICAL WIRING AND CONDUITS LEADING INTO THE POLE. REFER TO ELECTRICAL DWG'S FOR ADDITIONAL INFORMATION.
  - D12 REMOVE & RELOCATE EXISTING UTILITIES (I.E. GAS LINE, WATER LINE, FIRE LINE, SEWER LINE, ETC) TO MATCH NEW LAYOUT. REFER TO CIVIL DRAWINGS FOR ADDITIONAL INFORMATION.
  - D13 CAREFULLY REMOVE EXISTING PRECAST CONCRETE ELECTRICAL BOX & LINE, COMMUNICATION LINE, ETC. REFER TO CIVIL AND ELECTRICAL DWG'S FOR ADDITIONAL INFORMATION.
  - D14 **DEMOLISH AND REMOVE (E) CONCRETE WALKWAYS IN ITS ENTIRETY. PREPARE SITE FOR INSTALLATION OF NEW SURFACE. REFER TO CIVIL DRAWINGS.**
  - D15 (E) CONCRETE SLAB TO REMAIN SHALL BE PROTECTED, IN PLACE DURING ALL PHASES OF CONSTRUCTION. SANICUT AS NECESSARY FOR A CLEAN STRAIGHT EDGE.
  - D16 REMOVE / RELOCATE EXISTING GAS METER AND ALL ASSOCIATED PIPING, VALVES, ETC. AS REQUIRED PER UTILITY COMPANY REQUIREMENTS. FOR ADDITIONAL INFORMATION, REFER TO PLUMBING DRAWINGS.
  - D17 (E) CONCRETE CONCRETE STAIR TO REMAIN, PROTECT IN PLACE.
  - D18 REMOVE (E) CHAIN LINK FENCING, GATE, CMU, FOOTINGS. REFER TO NEW SITE PLAN.
  - D19 (E) CHAIN LINK FENCING, GATE, FOOTINGS, ETC. TO REMAIN. PROTECT IN PLACE. DAMAGED FENCING SHALL BE REPAIRED BY THE CONTRACTOR AT NO ADDITIONAL COST TO THE DISTRICT.
  - D20 REMOVE (E) CATCH BASIN, DRAINAGE PIPES, ETC. REFER TO CIVIL DWG'S.
  - D21 (E) CATCH BASIN, DRAINAGE SWALE TO REMAIN. PROTECTED IN PLACE DURING ALL PHASES OF THE CONSTRUCTION REFER TO SITE PLAN.
  - D22 (E) CMU RETAINING WALL AND FOOTING TO REMAIN. ANY DAMAGE TO WALL AND FOOTING SHALL BE REPAIRED AT CONTRACTOR'S EXPENSE.
  - D23 REMOVE & DISPOSE (E) PRECAST CONCRETE MONUMENT SIGN INCLUDING FOOTINGS & (E) ELECTRONIC MARGLEE SIGN, INCLUDING FOOTINGS. PROTECT ELECTRONIC SIGN AND TURN TO DISTRICT.
  - D24 REMOVE (E) SIGN, SIGN POST, FOOTINGS, ETC.
  - D25 DEMOLISH AND REMOVE (E) BASKETBALL BACKSTOPS, POSTS, FOOTINGS, ETC.
  - D26 PROTECT (E) FIRE WATER BACK FLOW PREVENTER / ENCLOSURE. REFER TO CIVIL DWG'S.
  - D27 REMOVE (E) TURF, AND IRRIGATION LINES, RE-GRADE AND RECOMPACT. FOR ADDITIONAL INFORMATION REFER TO CIVIL AND LANDSCAPE DRAWINGS.
  - D28 DEMOLISH AND REMOVE (E) 12'-0" HIGH BALL WALLS, CONC. PAVING AND FOOTINGS.
  - D29 DEMOLISH AND REMOVE (E) 8' HIGH CMU UTILITY ENCLOSURE, PAVING, STEEL FENCE & GATES.
  - D30 REMOVE AND RELOCATE EXISTING FIRE HYDRANT AND WATER LINE. REFER TO CIVIL DRAWINGS.
  - D31 **DEMOLISH AND REMOVE (E) STEEL GUARDRAIL AND CONCRETE CURB & CONC. PAVING AND GUTTER.**
  - D32 REMOVE CHAIN LINK BACK STOPS INCLUDING FOOTINGS.
  - D33 RELOCATE STREET LIGHT POLE. REFER TO CIVIL & ELECTRICAL DWG'S.
  - D34 PROTECT (E) FIRE HYDRANT, REFER TO CIVIL DWG'S.
  - D35 DEMOLISH EXISTING PARKING SIGNAGE AND (E) WHEEL STOPS AS REQUIRED.
  - D36 DEMOLISH AND REMOVE (E) TETHER BALL POLE & FOOTINGS, ETC.

### LEGEND

- PROPERTY LINE
- - - - - (E) FENCING
- - - - - (E) FENCING TO BE REMOVED
- EXISTING BUILDINGS TO REMAIN
- ▨ (E) RELOCATABLE CLASSROOM BUILDING TO REMAIN
- P-X (E) RELOCATABLE CLASSROOM BUILDING TO BE REMOVED.
- - - - - (E) BUILDING / ENCLOSURE TO BE REMOVED
- ▨ (E) ASPHALT CONCRETE PAVING TO BE REMOVED AT PARKING LOTS, DRIVEWAYS, AND PLAYGROUND
- ▨ (E) CONCRETE SLAB TO BE REMOVED TYPICAL ENTIRE SITE, U.N.O.
- ☉ TREES TO REMAIN.
- ☉ TREES TO BE REMOVED IN THEIR ENTIRETY INCLUDING ROOT BALL

NOTE:  
REFER TO CIVIL, LANDSCAPE, ELECTRICAL, PLUMBING & FIRE PROTECTION PLANS FOR ADDITIONAL DEMOLITION SCOPE.

SCALE: 1" = 40' - 0"

1

IDENTIFICATION STAMP  
DIV. OF THE STATE ARCHITECT  
APP. 03-119817 INC.  
REVIEWED FOR  
SS  FLS  ACS   
DATE: 01/15/2020

NO. DATE REVISION

DATE: 01/14/2020  
JOB NO.: 150703  
DRAWN BY: JH/RG  
CHECKED BY: JAMA

**ZEMBA + PRIETO ARCHITECTS**  
401 South Glenhurst Boulevard • Suite 400 • Burbank, CA 91502  
P: (818) 841-2585 • F: (818) 841-1782 • www.zemba-prieto.com

**DEMOLITION SITE PLAN**

**ROWLAND UNIFIED SCHOOL DISTRICT**  
1830 NOGALES STREET  
ROWLAND HEIGHTS, CA. 91748

**STANLEY G. OSWALT ACADEMY**  
19501 SHADOW OAK DRIVE  
WALNUT, CA 91789

**LICENSED ARCHITECT**  
C-33216  
RENEWAL DATE  
NOV. 30, 2021  
STATE OF CALIFORNIA

SHEET NO.  
**AS0.1**

DEMOLITION SITE PLAN